

tessuti antimacchia per esterni ed interni

Linea

OutDoor



antimacchia



esterni



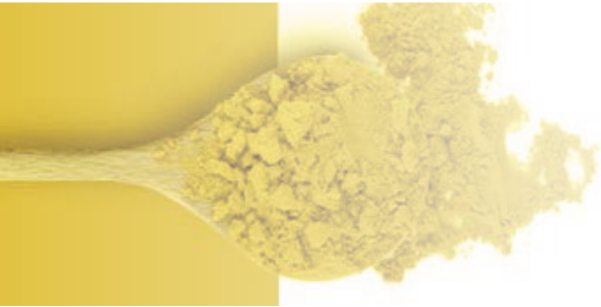
lavabile



OEKO-TEX®
CONFIDENCE IN TEXTILES
STANDARD 100
20160K1230 AITEX



Tested for harmful substances.
www.oeko-tex.com/standard100



135 LIMONE LEMON

pagina 2-3



23 TURCHESE TURQUOISE

pagina 6-7



112 SABBIA SAND

pagina 10-11





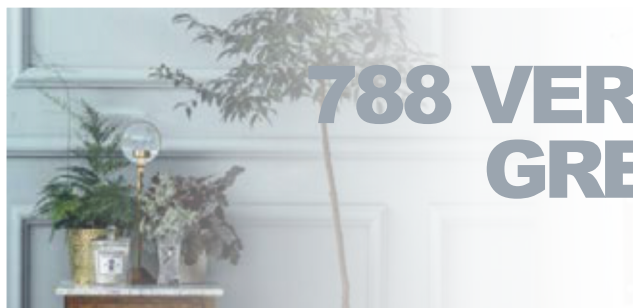
91 GRIGIO GREY

pagina 4-5



587 BLU ROYAL ROYAL BLUE

pagina 8-9



788 VERDE ACQUA GREEN WATER

pagina 12-13





KURA - A · 135 limone / lemon



SAKA - A · 135 limone / lemon



UNITI - A
135 limone / lemon



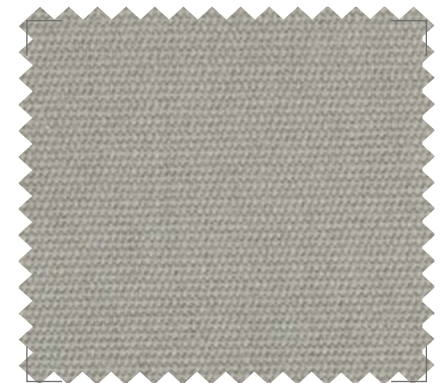
UNITI - A
00 naturale / natural



SORO - A · 135 limone / lemon

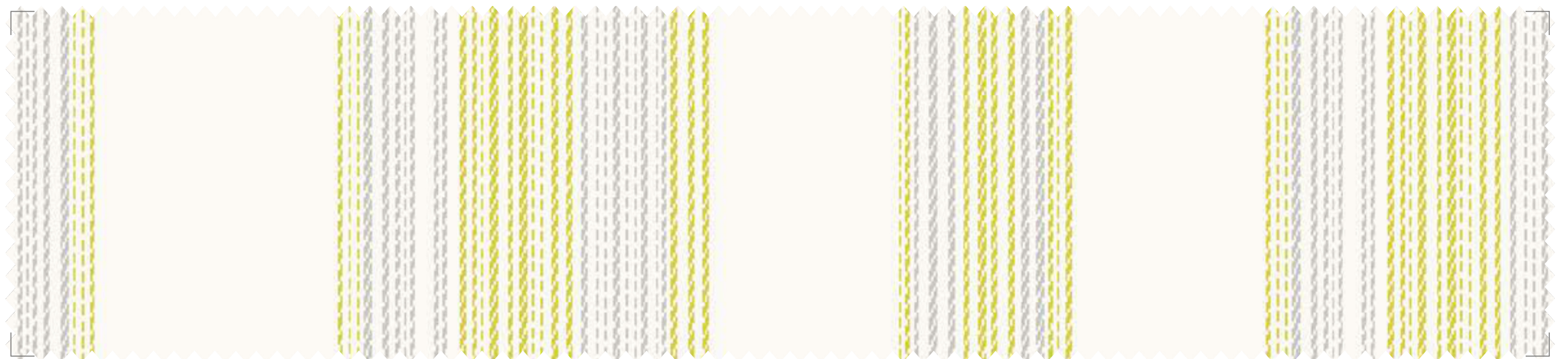


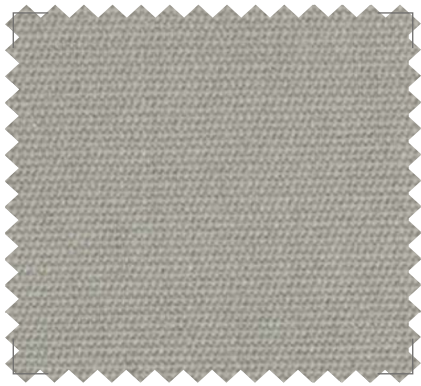
IGOA - A · 135 limone / lemon



UNITI - A
91 grigio / grey







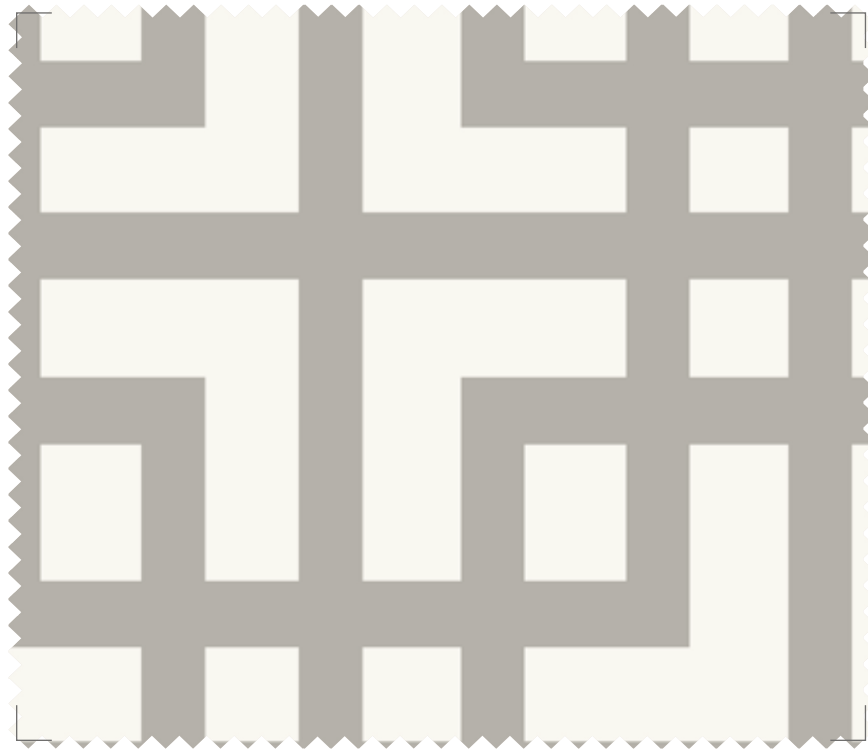
UNITI - A
91 grigio / grey



UNITI - A
304 antracite / anthracite



UNITI - A
00 naturale / natural



KURA - A · 91 grigio / grey



SAKA - A · 91 grigio / grey



SORO - A · 91 grigio / grey



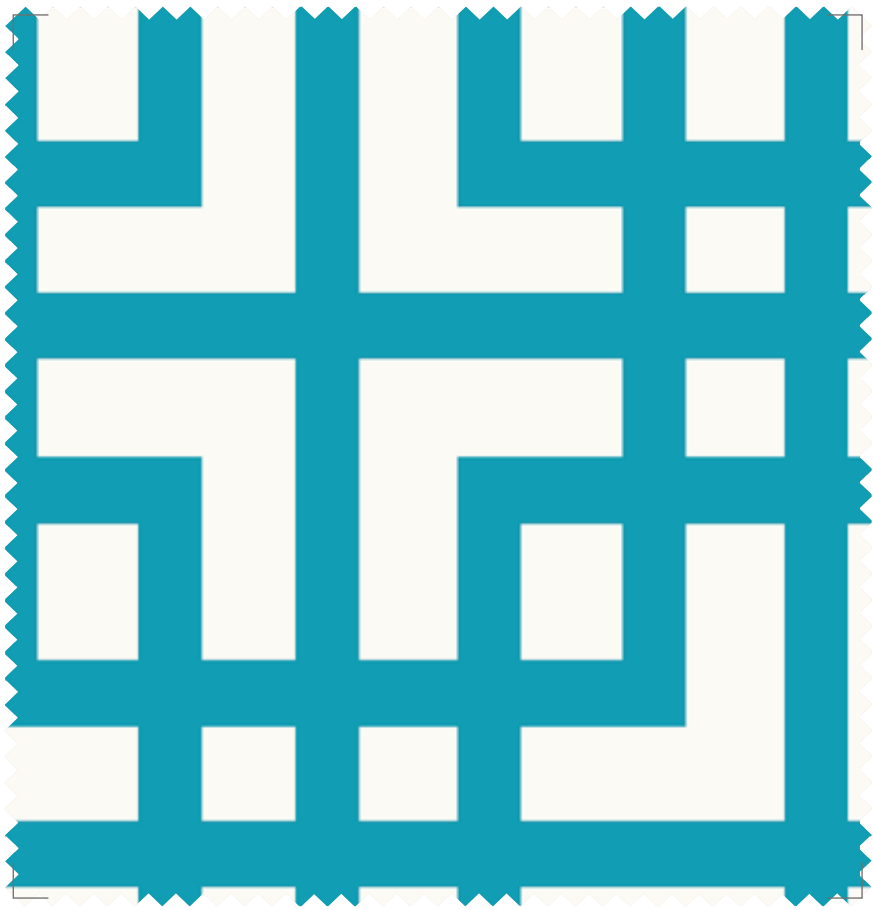


ELIS- A · 91 grigio / grey



IGOA - A · 91 grigio / grey





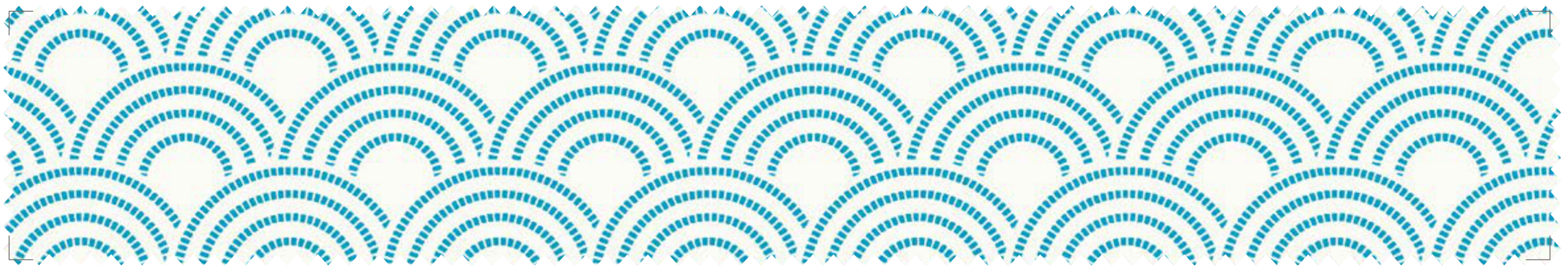
KURA - A · 23 turchese / turquoise



SAKA - A · 23 turchese / turquoise



SORO - A
23 turchese / turquoise



IGOA - A · 23 turchese / turquoise

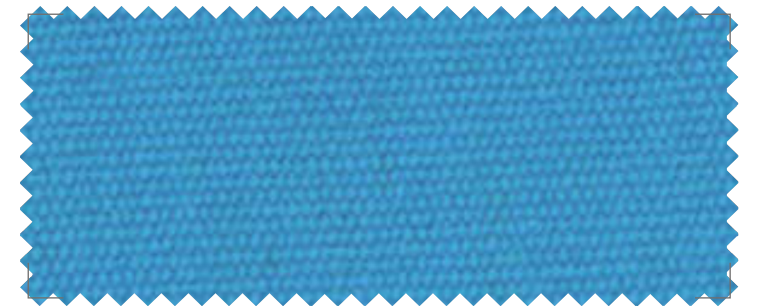




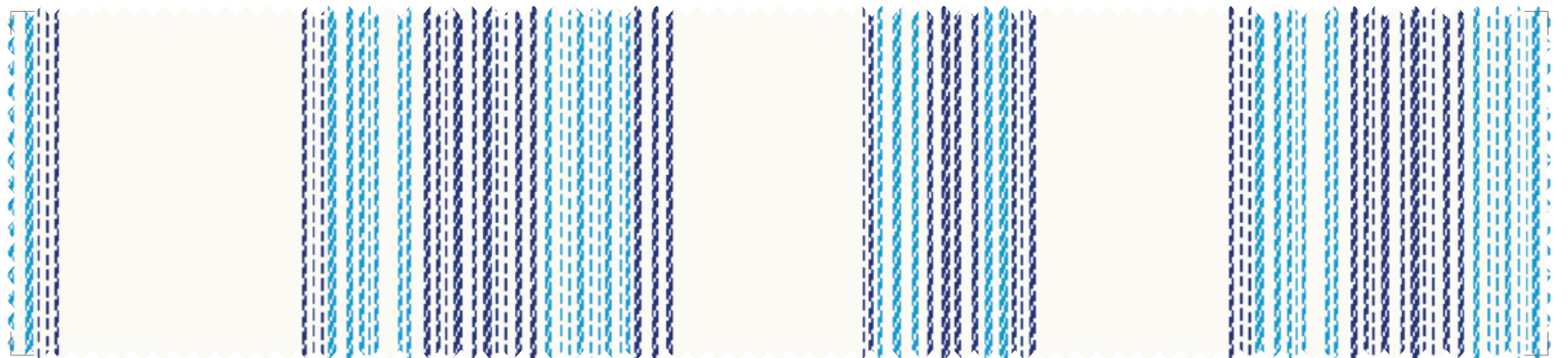
UNITI - A · 00 naturale / natural



UNITI - A · 587 blu royal / royal blue



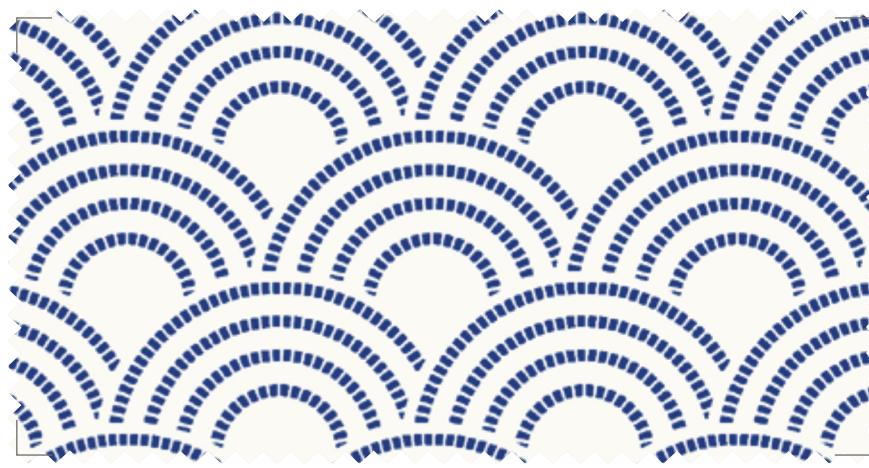
UNITI - A · 23 turchese / turquoise



ELIS- A · 1033 blu royal / turchese - royal blue / turquoise



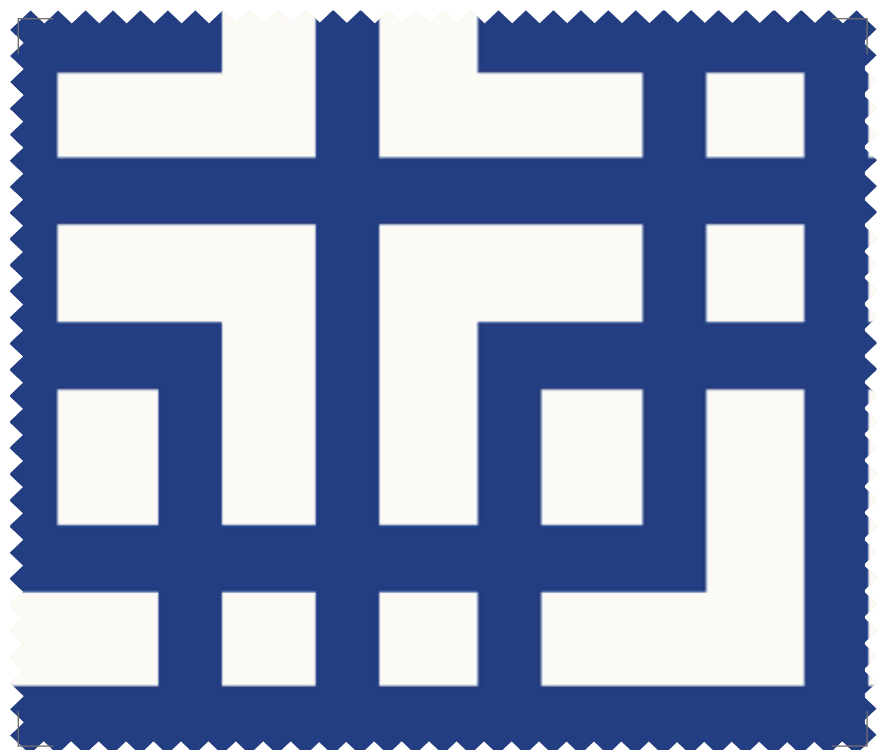
SORO - A · 587 blu royal / royal blue



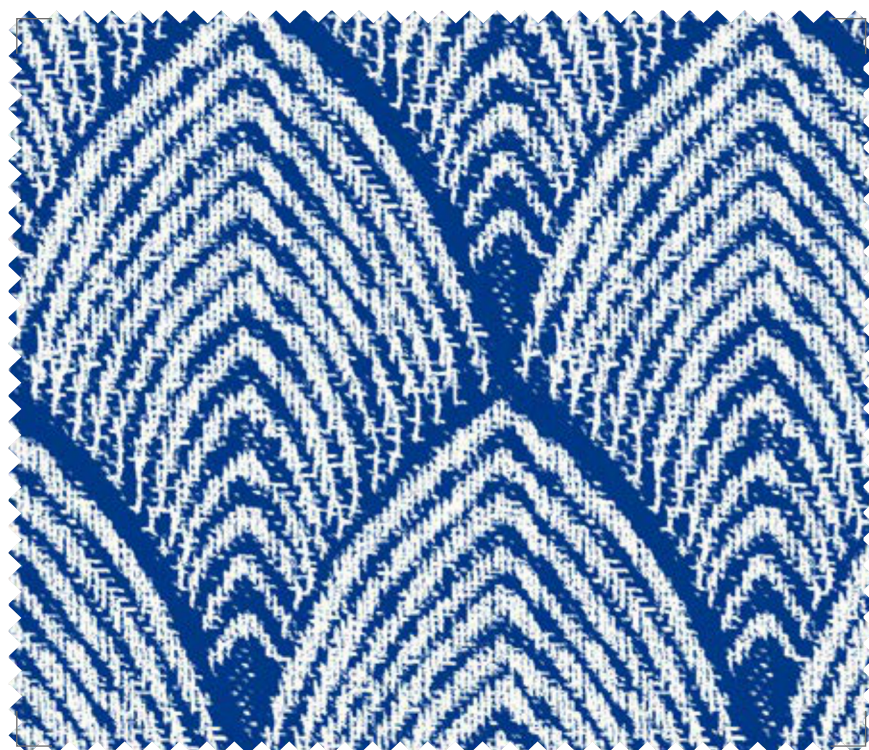
IGOA - A · 587 blu royal / royal blue



UNITI - A
587 blu royal / royal blue



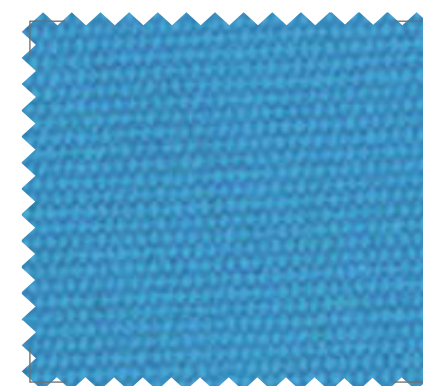
KURA - A · 587 blu royal / royal blue



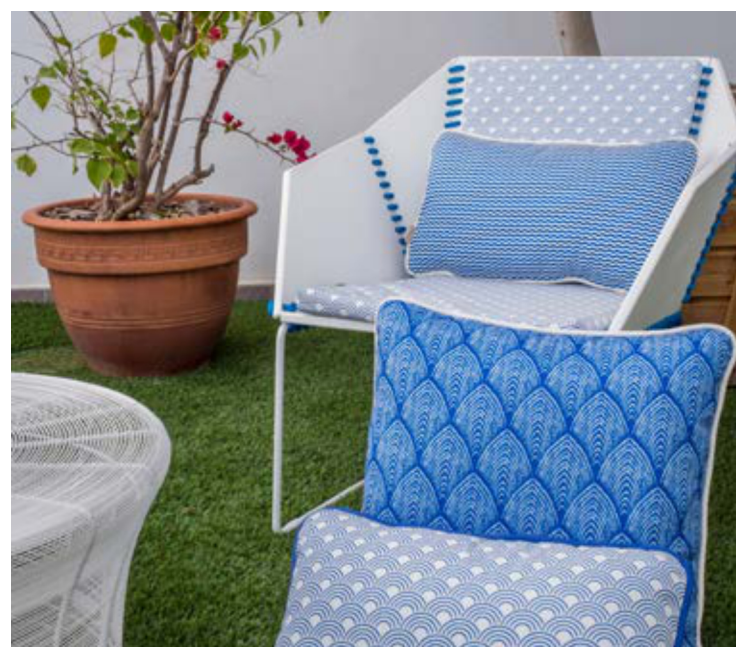
SAKA - A · 587 blu royal / royal blue



UNITI - A
00 naturale / natural



UNITI - A
23 turchese / turquoise







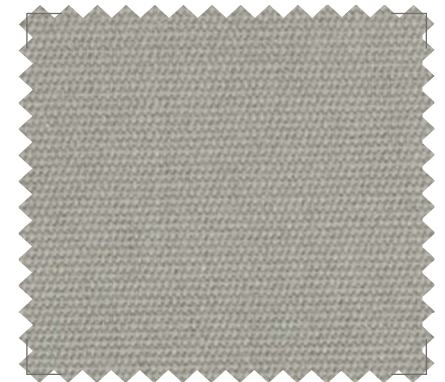
KURA - A · 112 sabbia / sand



SAKA - A · 112 sabbia / sand



UNITI - A
112 sabbia / sand



UNITI - A
91 grigio / grey



SORO - A · 112 sabbia / sand



IGOA - A · 112 sabbia / sand

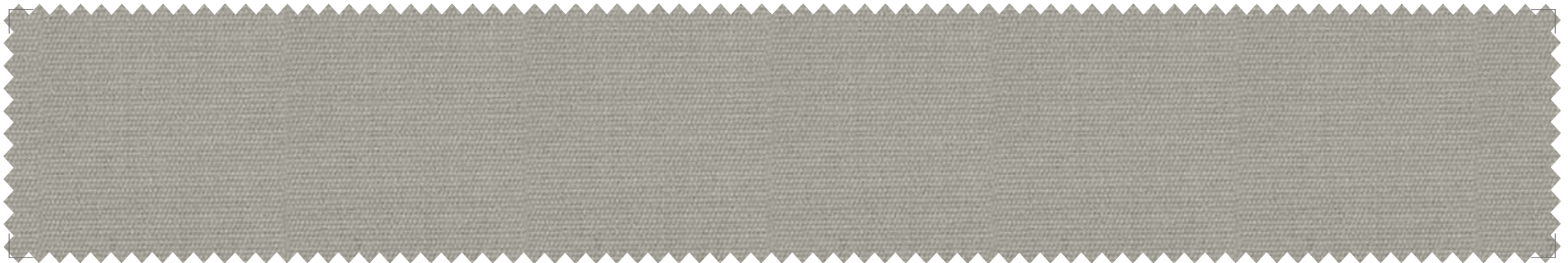


UNITI - A
00 naturale / natural

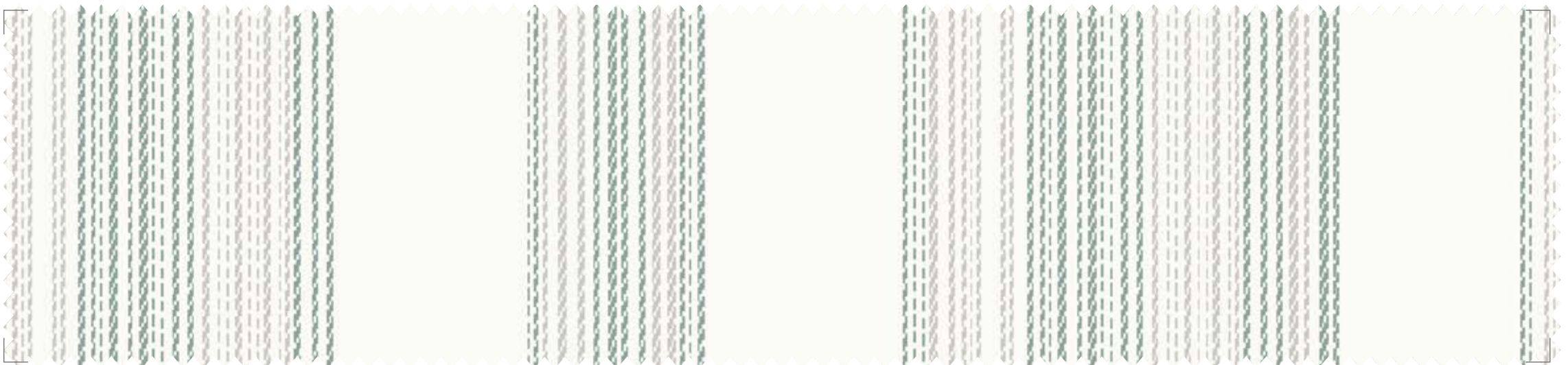


ELIS- A · 112 sabbia / sand

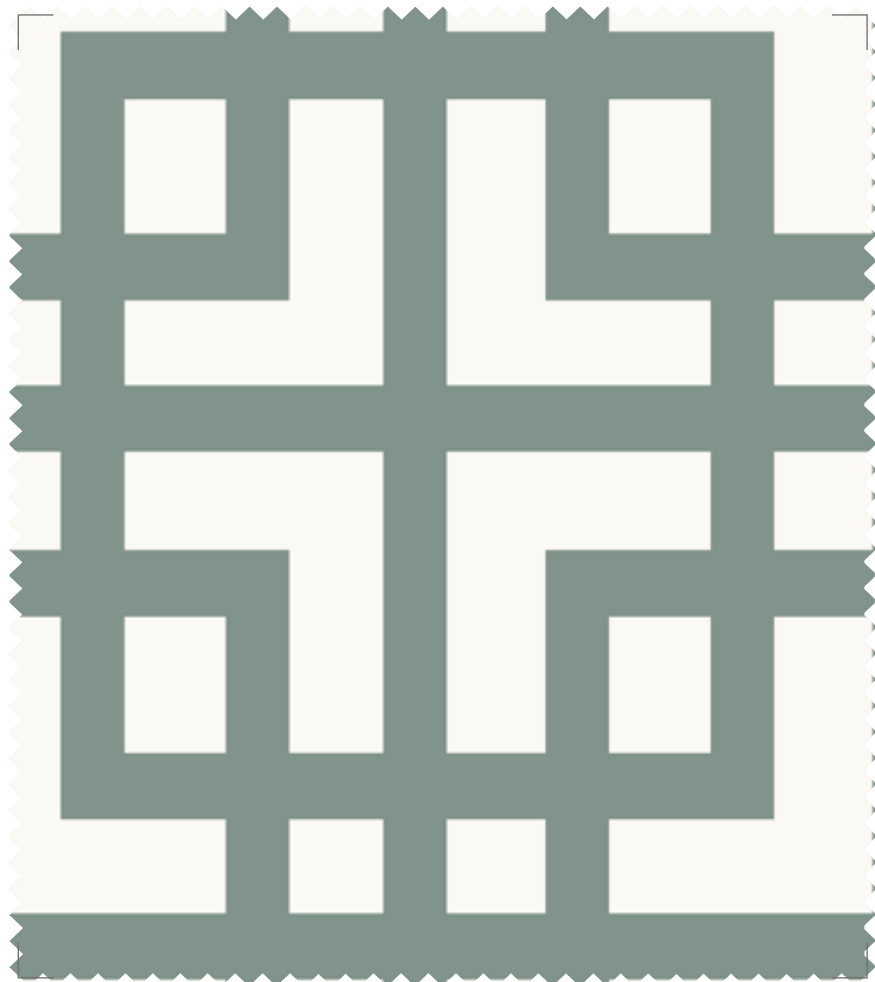




UNITI - A · 91 grigio / grey



ELIS - A · 788 verde acqua / water green



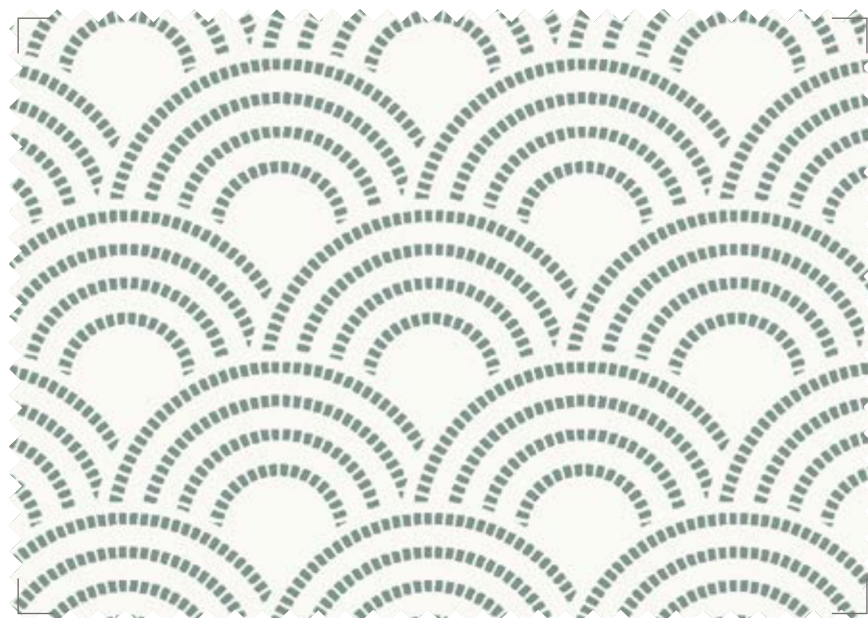
KURA - A · 788 verde acqua / water green



UNITI - A · 00 naturale / natural



SAKA - A · 788 verde acqua / water green



IGOA - A · 788 verde acqua / water green




SORO - A
788 verde acqua / water green

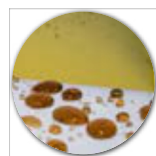
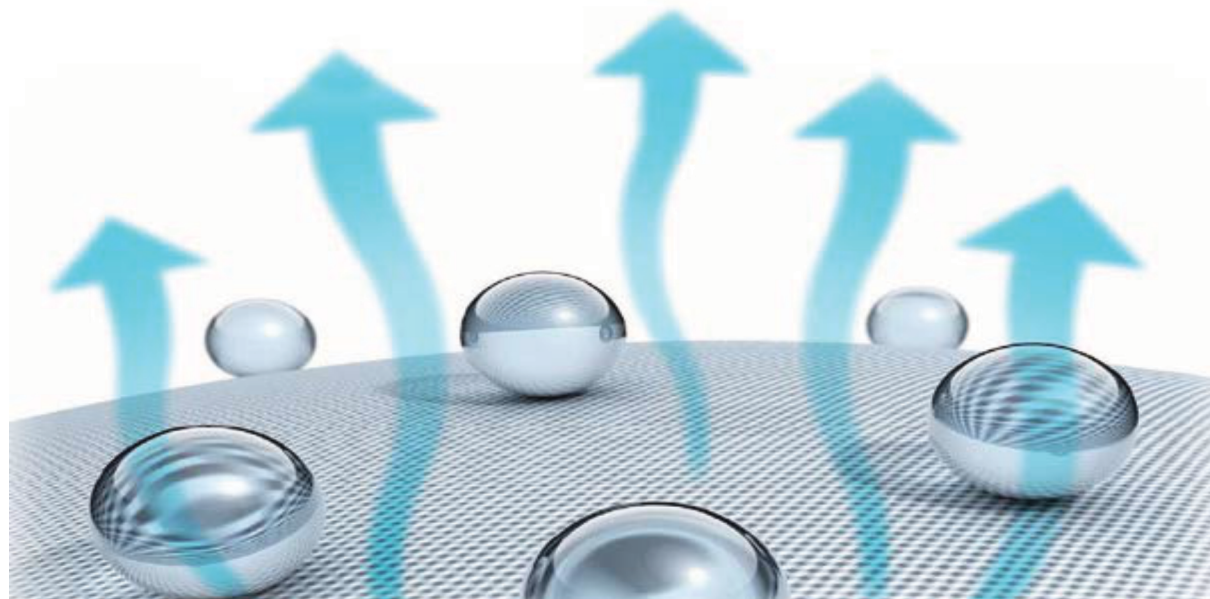


UNITI - A
788 verde acqua / water green



SCHEDA TECNICA

| | |
|------------------------------|---|
| ARTICOLO | polly 100 |
| CODICE | |
| ALTEZZA | 160 cm |
| CIMOSE | ↔ |
| RAPPORTO | |
| RESTRINGIMENTO | |
| COMPOSIZIONE TESSUTO | 100% poliestere with acrylic resin |
| PESO gr/mtq | 150 gr/mtq |
| ARMATURA | jacquard |
| CARATTERISTICHE DI FISSAGGIO | idrorepellente |
| FINISSAGGIO | antimacchia e fermafilo |
| MANUTENZIONE |     |



antimachia



esterni



MADE IN ITALY



tende da doccia



colonna d'acqua



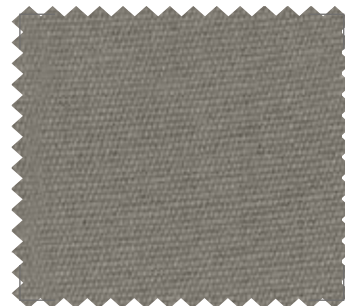
Naturale 00



Beige 30



Visone 168



Corda 626



Marrone 32



Sabbia 112



Caffé 35



Mostarda 43



Mandarino 330



Giallo 40



Limone 135



Arancio 60



Lilla 70



Fucsia 13



Bordeaux 14



Rosso 11



Viola 71



Verde acqua 788



Verde 50



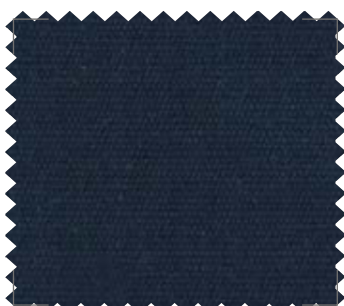
Verde bottiglia 955



Turchese 23



Blu royal 587



Blu navy 21



Grigio 91



Antracite 304



Nero 90

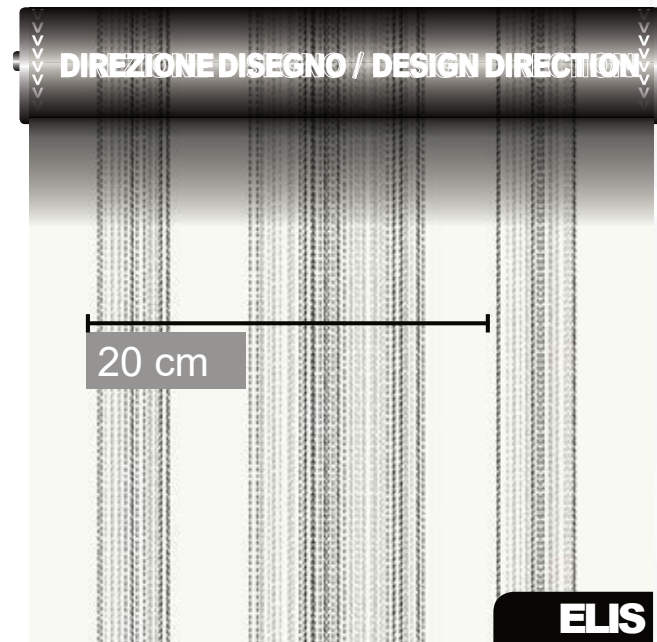


PRINTING DESIGNS

KURA · SAKA · SORO · IGOA · ELIS UNITI

| | | | |
|---|---------------------------------------|--------------------------|--|
| Produzione tecnica Production technic | | Digital pigment printing | Dry spun, fibre dyed |
| Numero di partita Custom tariff number | | 5512 29 10 | 5512 29 90 |
| Composizione / Composition | | 100% Acrylic, Dralon® | 100% Acrylic, Dralon® |
| Peso del tessuto per m ² Weight of fabric per m ² | | 205g | 190g |
| Altezza tessuto Width of fabric | | 160 | 160 |
| Solidità alla luce Fastnessto light | ISO 105-B02:1994 Artif. weathering | 6-7 depending on colour | 4-7 depending on colour |
| Protezione ai raggi UV UV Factor protection | AS/NZS 4399/1996 | | UV40 Standard 801 |
| Solidità al lavaggio 40°C Colour fastnessto washing 40°C | ISO 105-C06:2010 | 5 | 5 |
| Solidità del colore allo sbiancamento Colour fastnessto bleaching | UNE-EN 20105- N01:1996 | | 5 |
| Solidità del colore in acqua salata Colour fastnessto sea water | BS EN ISO 105-E02:1996 | | 4-5 |
| Solidità del colore in acqua clorurata Colour fastnessto chlorinated water | BS EN ISO 105-E03:2010 | | 4-5 |
| Solidità del colore al lavaggio a secco Colour fastnessto dry cleaning | ISO 105-D01:2010 | | 4-5 |
| Solidità colore alla stiratura 150°C Colour fastnessto hot pressing 150°C | ISO 105-D01:2010 | 5 | 5 |
| Restringimento al lavaggio in ordito Warp wash shrinkage | UNE EN 25077 | 1,0% | 0,5% |
| Restringimento al lavaggio in trama Weft wash shrinkage | UNE EN 25077 | 2,0% | 2,0% |
| Resistenza delle cuciture Seam strength - Grab. | BS EN ISO 13935-2:1999 | | WARP: 56,8 kg STP WEFT: 30,0 kg STP sewing thread breaks |
| Solidità alla traspirazione Fastnessto perspiration | BS EN ISO 105 E04:2009 | | ph 5,5 acid: 4-5 ph 8 alcali: 4-5 |
| Resistenza al pilling Resistance to pilling | ISO 12945-2:2001 | 4 | 4 |
| Solidità del colore allo sfregamento Fastnessto rubbing | ISO 105-X12:2003 | | 5 |
| Resistenza all'abrasione (Martindale) Fastnessto abrasion (Martindale) | ISO 12947-2: 1998 | 22.000 | 22.000 |
| Resistenza alla rottura Breaking strength | ISO 13934-1: 1999+ERRATUM 2000 | | Average elongation Warp: 3,6 CV% Weft: 2,0 CV% |
| Resistenza allo strappo - Elmendorf Tearing strenght - Elmendorf | ISO 13937-1:2000 Textest FX3750 | | Warp: 4003 g Weft: 2777 g |
| Resistenza alla penetrazione dell'acqua Water penetration | BS EN 20811, ISO 811, 1992-1981 | | 500 cm H ₂ O |
| Protezione all'acqua - Teflon® spray Water repellency Spray test - Teflon® | ISO4920: AATCC20-21010 | 90 | 90 |
| Repellenza all'olio - Teflon® Oil repellency - Teflon® | ISO 14419: AATCC118:2012 | 5 | 6 |
| Finissaggio Teflon® / Teflon® finishing | | 3-5 washings | 3-5 washings |
| Oeko-tex Standard 100 | | Yes | Yes |







Linea

OutDoor

